



The Crossing

at Cramerton Mills



Magda Esola

m.esola@mybrooklinehome.com • 980-277-1306, Ext. 1

www.MyBrooklineHome.com

Cramerton, NC 28032 • We can't wait to Welcome You Home!





The Crossing

at Cramerton Mills



COMING SOON!

Nestled near the side of Cramer Mountain, The Crossing at Cramerton Mills features thoughtfully-designed three story townhomes with front porches and expansive great room and foyer areas. Feeling worlds apart from the hustle and bustle of everyday life, this community is conveniently located near the historic downtowns of Cramerton and Belmont for a host of eating, shopping and recreational options—and Uptown Charlotte is only a short drive if you want to catch a game or show!

Give us an opportunity to WOW YOU!

www.MyBrooklineHome.com

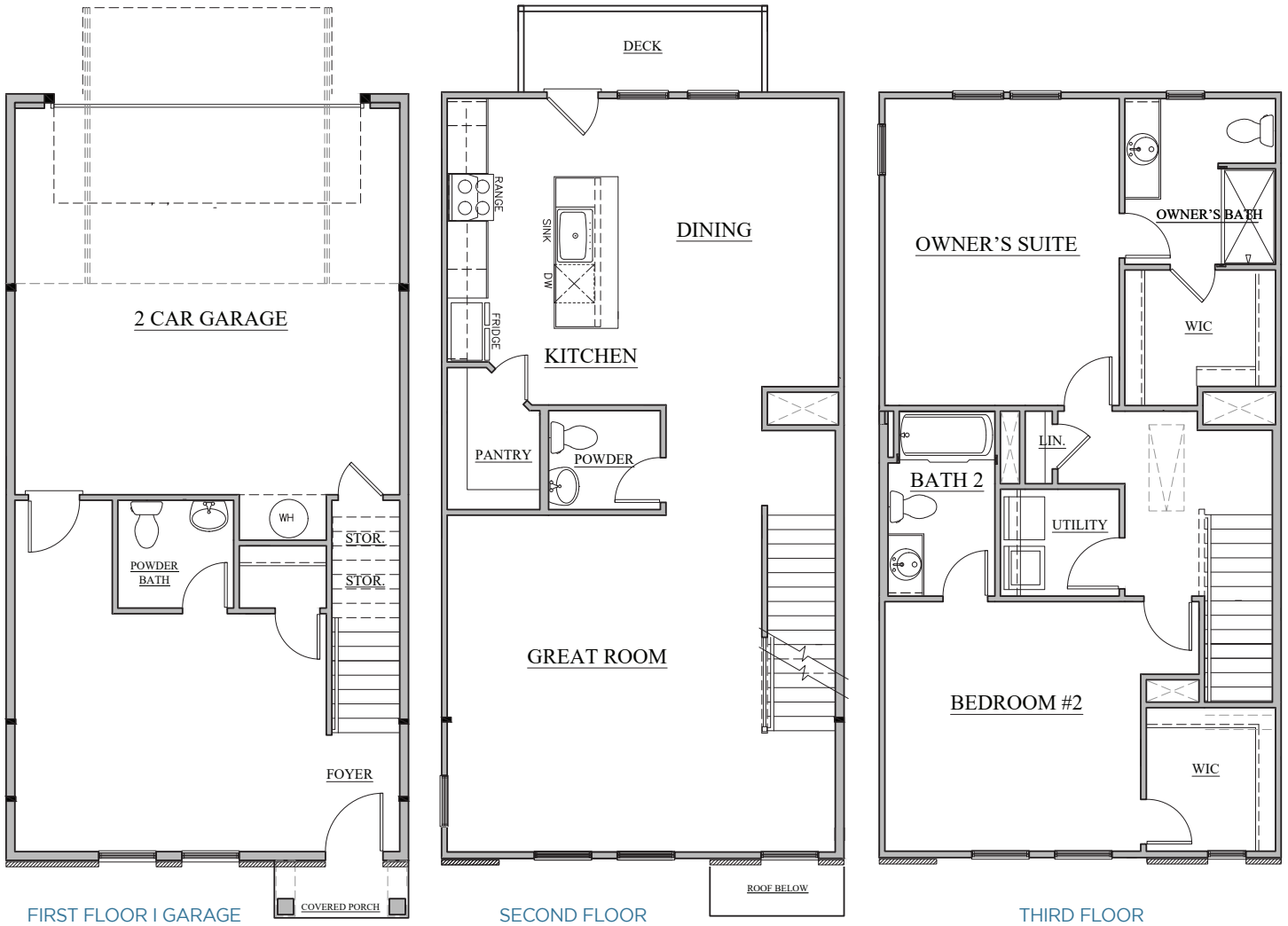
WELCOME HOME!



www.MyBrooklineHome.com • 980-277-1306, Ext. 1

All floorplans and elevations are the property of Brookline Homes, LLC and may not be reproduced. Prices, plans, dimensions, specifications, materials and availability, improvements and amenities depicted or described herein are subject to change or cancellation (in whole or in part) without notice. Artist's renderings are conceptual and may include options and/or upgrades and may illustrate roof lines which will vary due to site conditions. This does not constitute an offer to sell real property in any jurisdictions where prior registration or other advance qualification of real property is required. Broker participation is welcome.

WELCOME HOME!

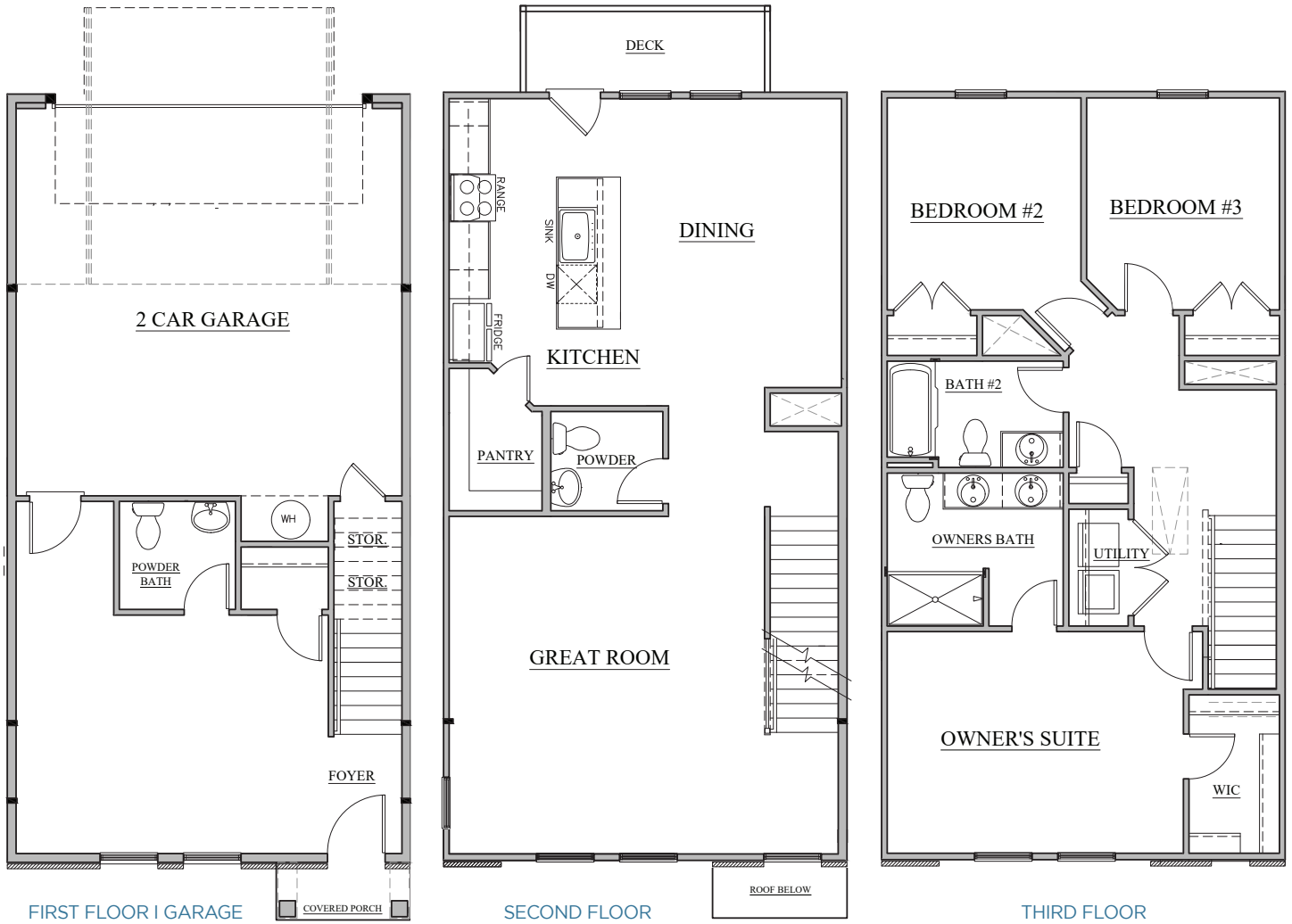


www.MyBrooklineHome.com • 980-277-1306, Ext. 1

All floorplans and elevations are the property of Brookline Homes, LLC and may not be reproduced. Prices, plans, dimensions, specifications, materials and availability, improvements and amenities depicted or described herein are subject to change or cancellation (in whole or in part) without notice. Artist's renderings are conceptual and may include options and/or upgrades and may illustrate roof lines which will vary due to site conditions. This does not constitute an offer to sell real property in any jurisdictions where prior registration or other advance qualification of real property is required. Broker participation is welcome.

Copyright 2024 BROOKLINE HOMES, LLC.

WELCOME HOME!



www.MyBrooklineHome.com • 980-277-1306, Ext. 1

All floorplans and elevations are the property of Brookline Homes, LLC and may not be reproduced. Prices, plans, dimensions, specifications, materials and availability, improvements and amenities depicted or described herein are subject to change or cancellation (in whole or in part) without notice. Artist's renderings are conceptual and may include options and/or upgrades and may illustrate roof lines which will vary due to site conditions. This does not constitute an offer to sell real property in any jurisdictions where prior registration or other advance qualification of real property is required. Broker participation is welcome.



GET TO KNOW THE TOWN!

Shopping, Dining, Culture and Recreation

Historic Cramerton

A hidden gem close to Center City Charlotte, the river-side city of Cramerton has something for historians and outdoor lovers alike! Turn of the century mill homes on tree-lined streets, the Mayworth Mills executive offices, over 4 miles of asphalt trails and connectors, Goat Island Park and Greenway, and multiple access points to the South Fork River offer ample opportunity to be active and soak in the communities history. Want to do some shopping or grab a bite to eat? The River Front Downtown is home to great eateries and shops, so check-out one of the local vendors, grab some lunch or dinner at the tex-mex joint or river front Public House and enjoy breathtaking views of the South Fork River.

Historic Belmont

Nestle up against the east side of Cramerton and only a short hop from Charlotte, Belmont is a pedestrian friendly town offering a multiple of dining, shopping, and recreational activities. Stroll along the brick walkways, drop into a locally owned shop or restaurant, or head to the riverside for your choice of activities. Coupled with Cramerton, Belmont offers a tight-knit, small-town community feel with big-city amenity and access.

Daniel Stowe Botanical Gardens

Reconnect with nature at this 110 acre wonderland of lush, colorful gardens amongst walking trails, fountains, a tropical plant and orchid conservancy, and more. Set within 380 acres of reserved meadows, woodlands, and lakeside property, this world-class facility was set into motion in 1991 by life-long nature and garden lover Daniel J. Stowe and his wife, Alene. Their vision for the grounds to evolve over the decades and rival the worlds great gardens has been realized, and this is a prime location to take in the wonders of nature and enjoy the various events held throughout the year.

Whitewater Center

With a mission that is “rooted in the belief that all human beings share a genetic code that compels us to play outside”- you could probably guess that this top-tier facility and brand encompasses all things related to outdoor recreational activities. The Whitewater Center offers hiking, biking, paddling, whitewater kayaking and rafting, zip-lining, climbing, and a host of other activities complete with dining and drink options located on-site. Make sure to keep up with the activity calendar to take advantage of a number of musical and outdoor events as well!

Lake Wylie

This 12,455 acre man-made lake on the South Carolina/North Carolina border has 325 miles of shoreline and is a mecca for summer water sports. The oldest lake on the Catawba, it was first created by a dam near the town of Fort Mill in 1904, then rebuilt in 1924.

The Crossing at Cramerton Mills | Cramerton, NC

www.MyBrooklineHome.com • 980-277-1306, Ext. 1



BH BROOKLINE
HOMES

The Crossing
at Cramerton Mills
Cramerton, NC 28032
www.MyBrooklineHome.com



At an early age, Brookline Homes Founder Scott Dirkschneider developed a passion for building and designing homes while working for several Nebraska home builders. He stayed true to that passion, and following high school entered college, earning degrees in Architecture and Construction Management before launching into a career of doing what he loved. While working for a mix of family-owned firms and large national builders, Scott developed his own system of time-tested “rules” and began to envision a company that would embrace the importance of value, quality, integrity, and exceptional personal service. After more than 40 years of working for others as an architecture and building professional—he ventured out on his own and formed **Brookline Homes, LLC** in 2014.

A family owned business, Brookline’s commitment to enduring value is evident in every home we build. Our focus on architectural design, science-based building systems and dedication to operational efficiencies allows us to deliver the visual appeal, quality, livability and value that today’s discerning home buyers deserve.

Today, the family tradition continues as President Andi Dirkschneider leads a team of dedicated professionals committed to championing our values and adhering to our Customer Promise. We understand the importance of family, and cannot WAIT to be a part of providing the perfect place for you and your family to celebrate milestones, build lasting memories, and spend time with loved ones.

Experience the Brookline Way today – we know you will be delighted!

The Brookline Difference

Brookline Homes was founded on strong family values with an emphasis on its unwavering Customer Promise.

“We promise to...”

- Treat you as a member of our family.
- Provide a pleasurable buying experience.
- Build a home of great quality and value.
- Provide exceptional after closing customer care.
- Treat everyone with dignity and respect.
- Do what we say we will do – our word is our bond.

www.MyBrooklineHome.com